

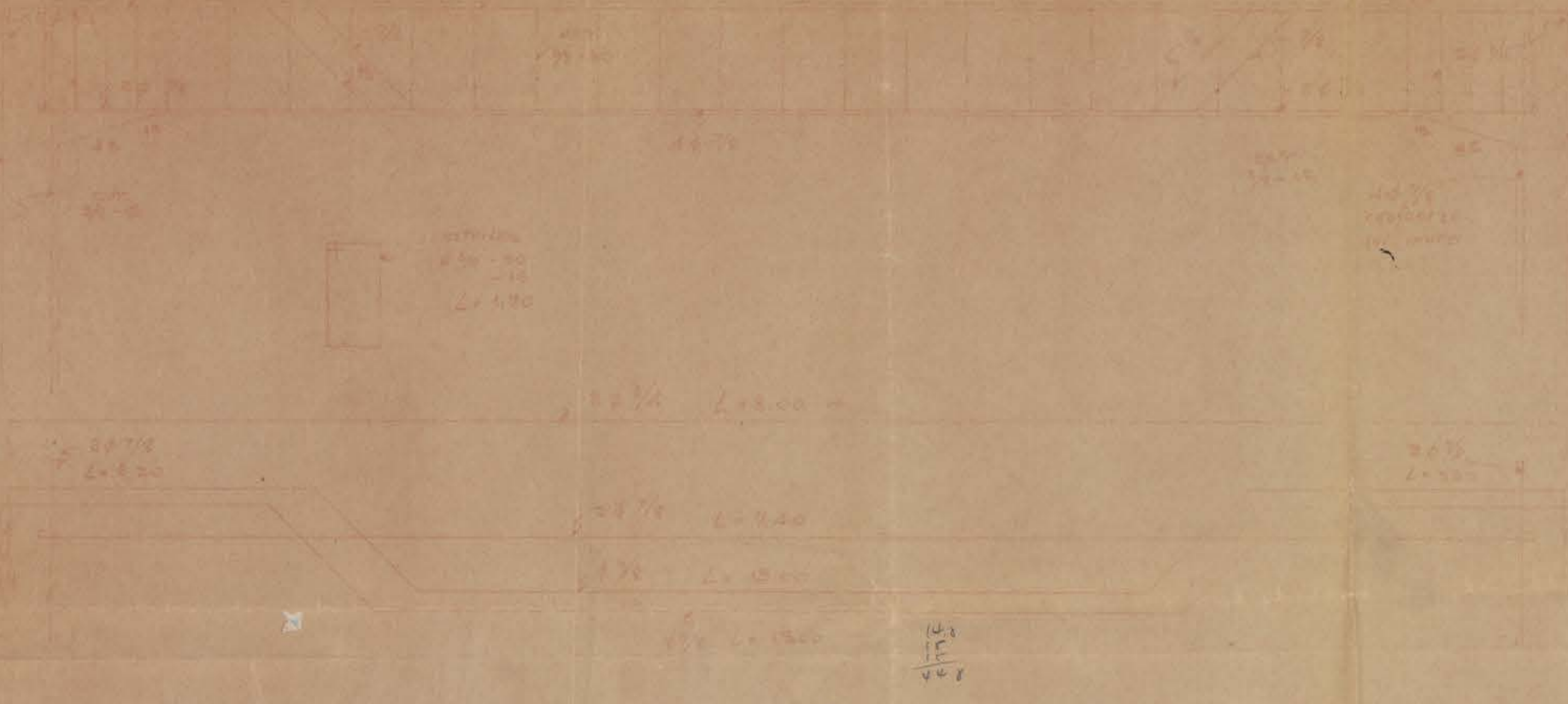
FACULTAD CENTRAL ESCUELA DE MEDICINA
 UNIVERSIDAD DE CONCEPCION

PLANOS ESTRUCTURALES LAMINA
 N° 23

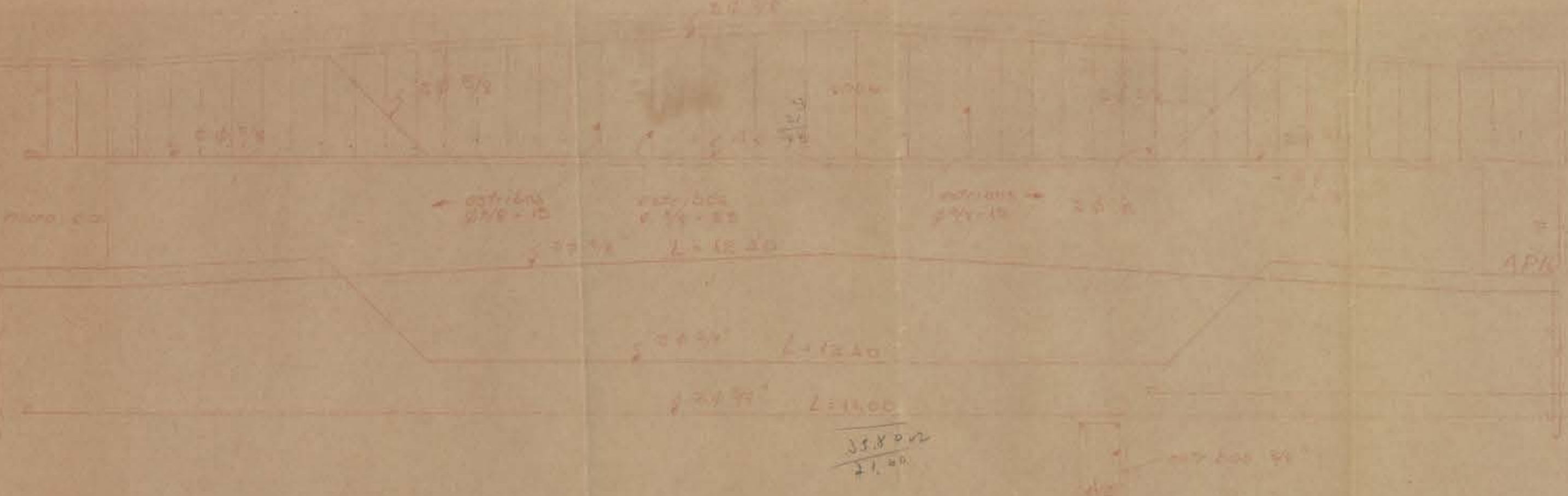
Detalles Vigas sobre 3° piso
 ADO A

Calculo *[Signature]*
 Concepcion Mayo de 1967
 Prof. Lic. Carlos [Signature]

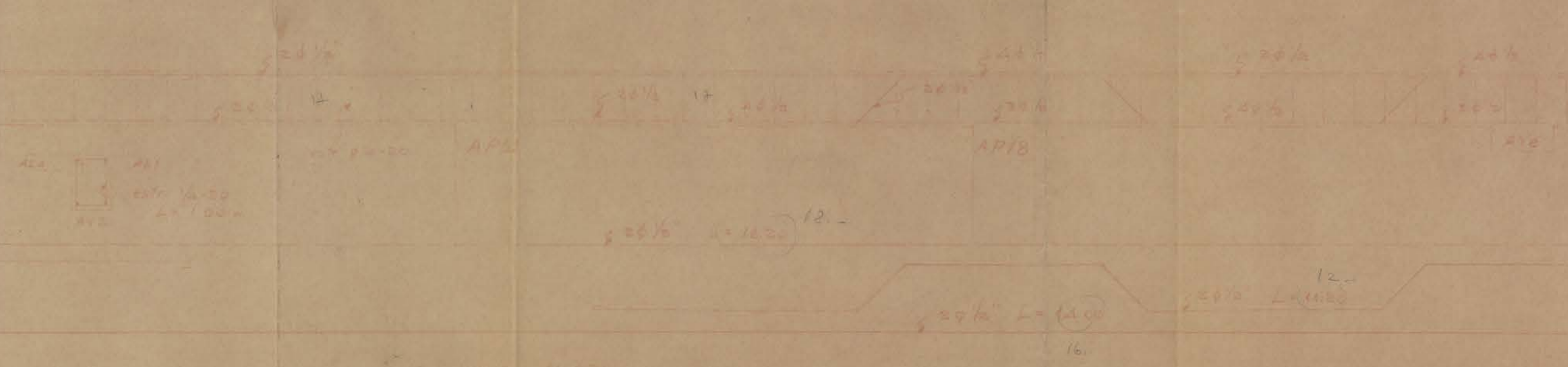
Viga CVB 30x35 cm



Viga AV1 25x35 cm



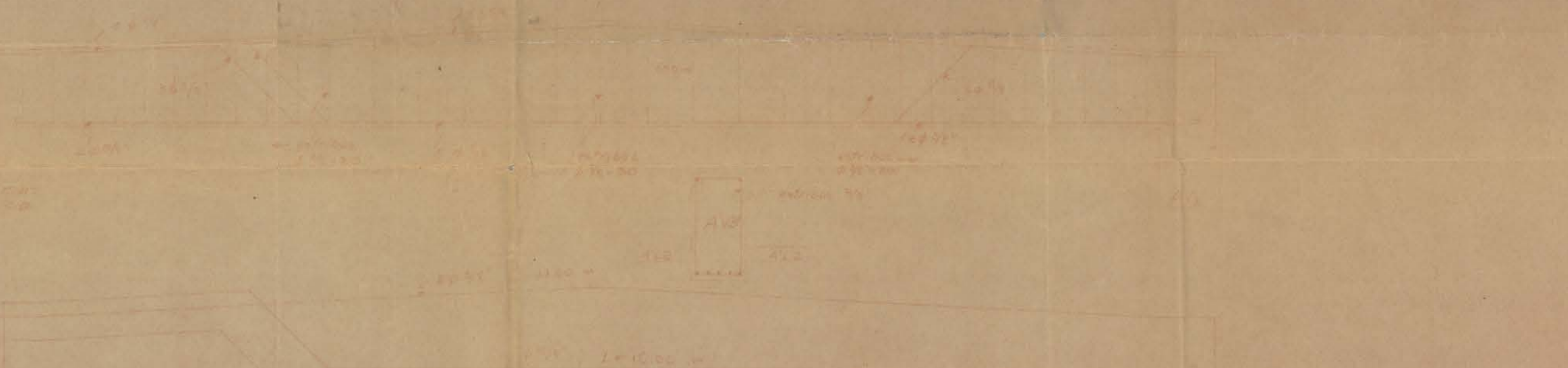
Viga AV2 25x35 cm



Viga AV2 25x35 cm (continuación)



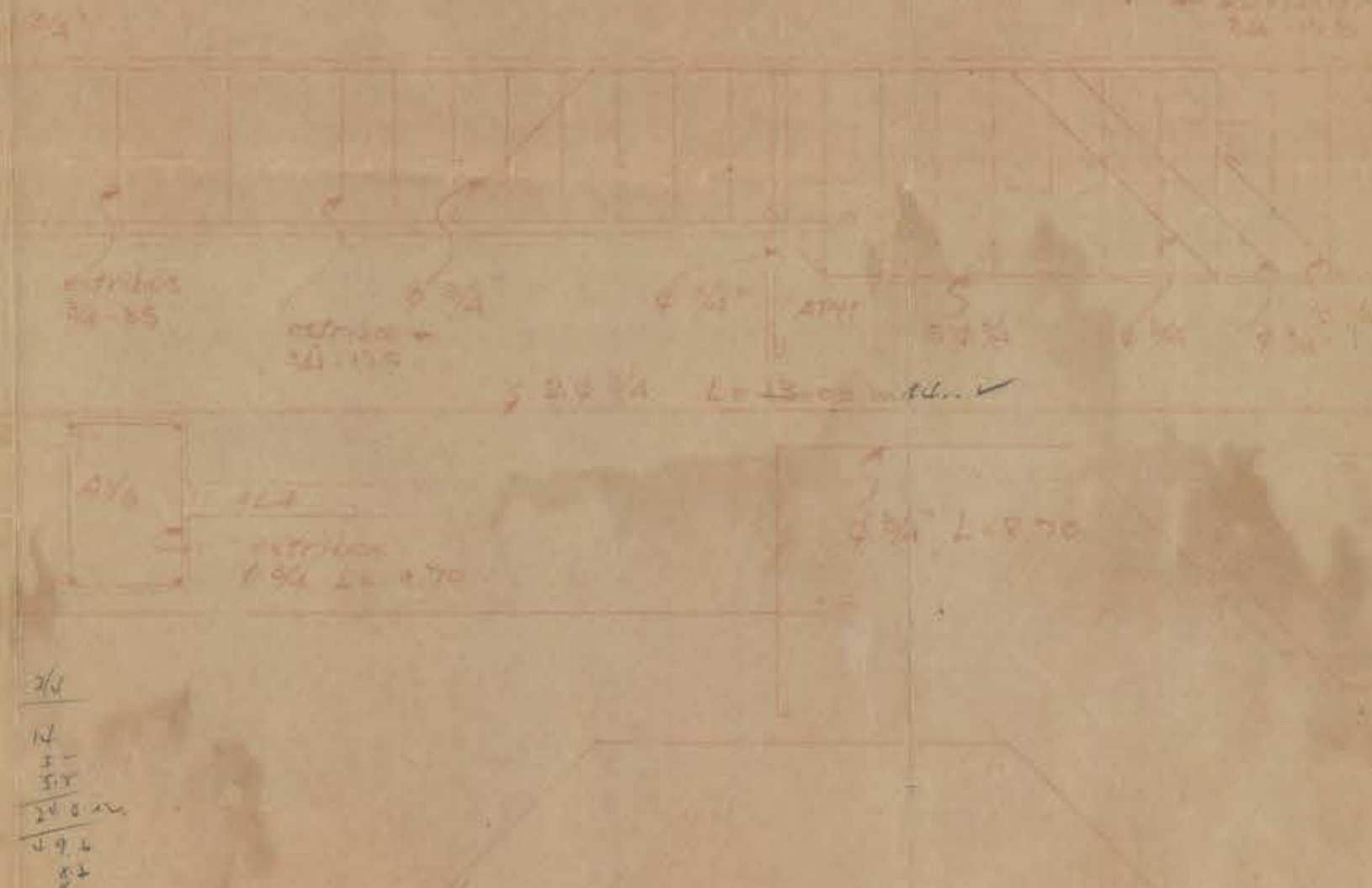
Viga AV3 25 cm de ancho



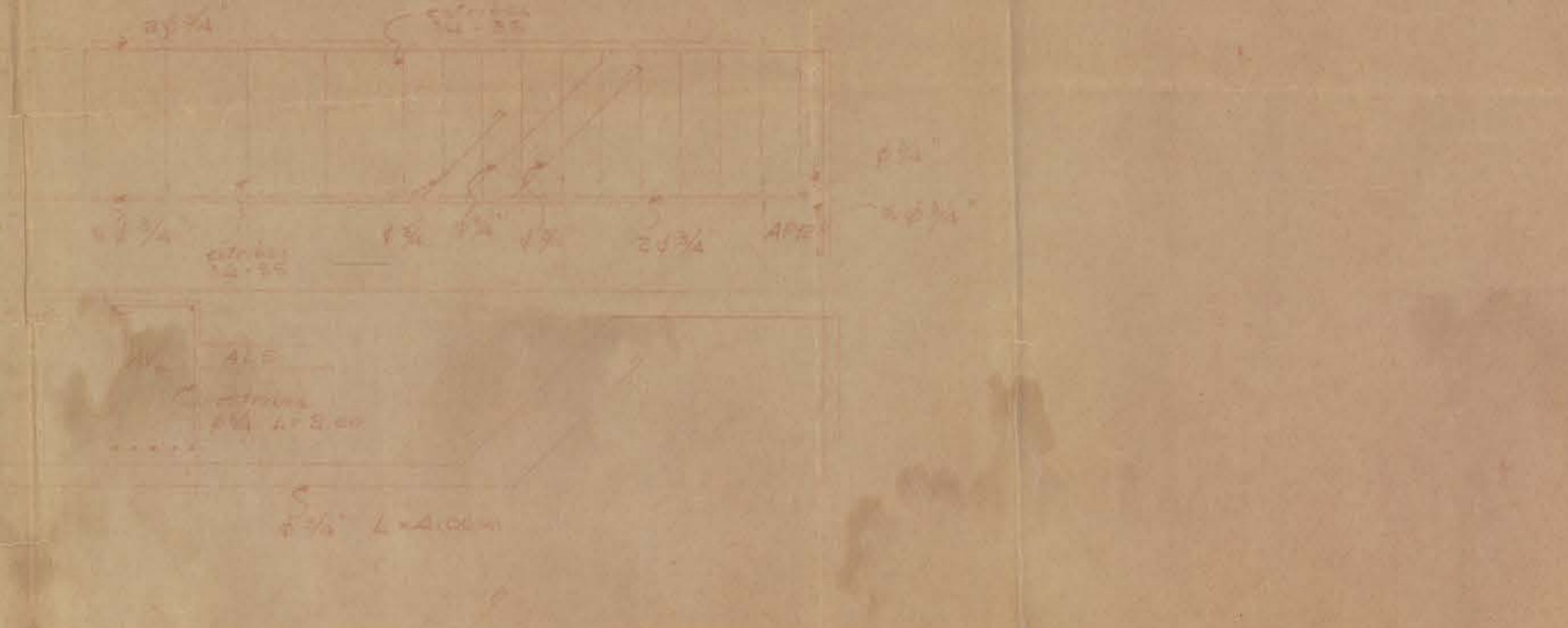
Viga AV6 40x40 cm



Viga AV6 40x30



Viga AVD 40x70



18