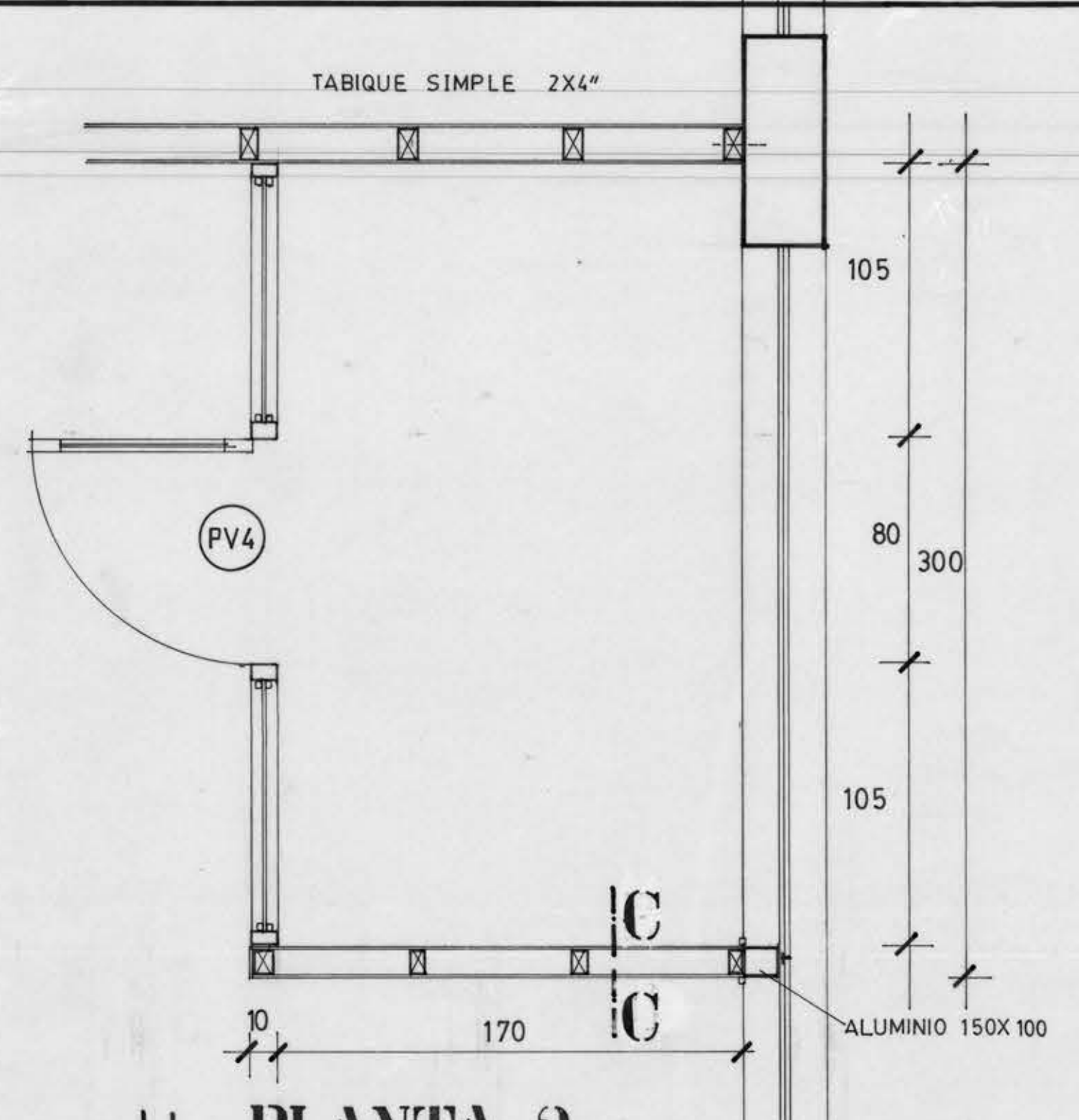
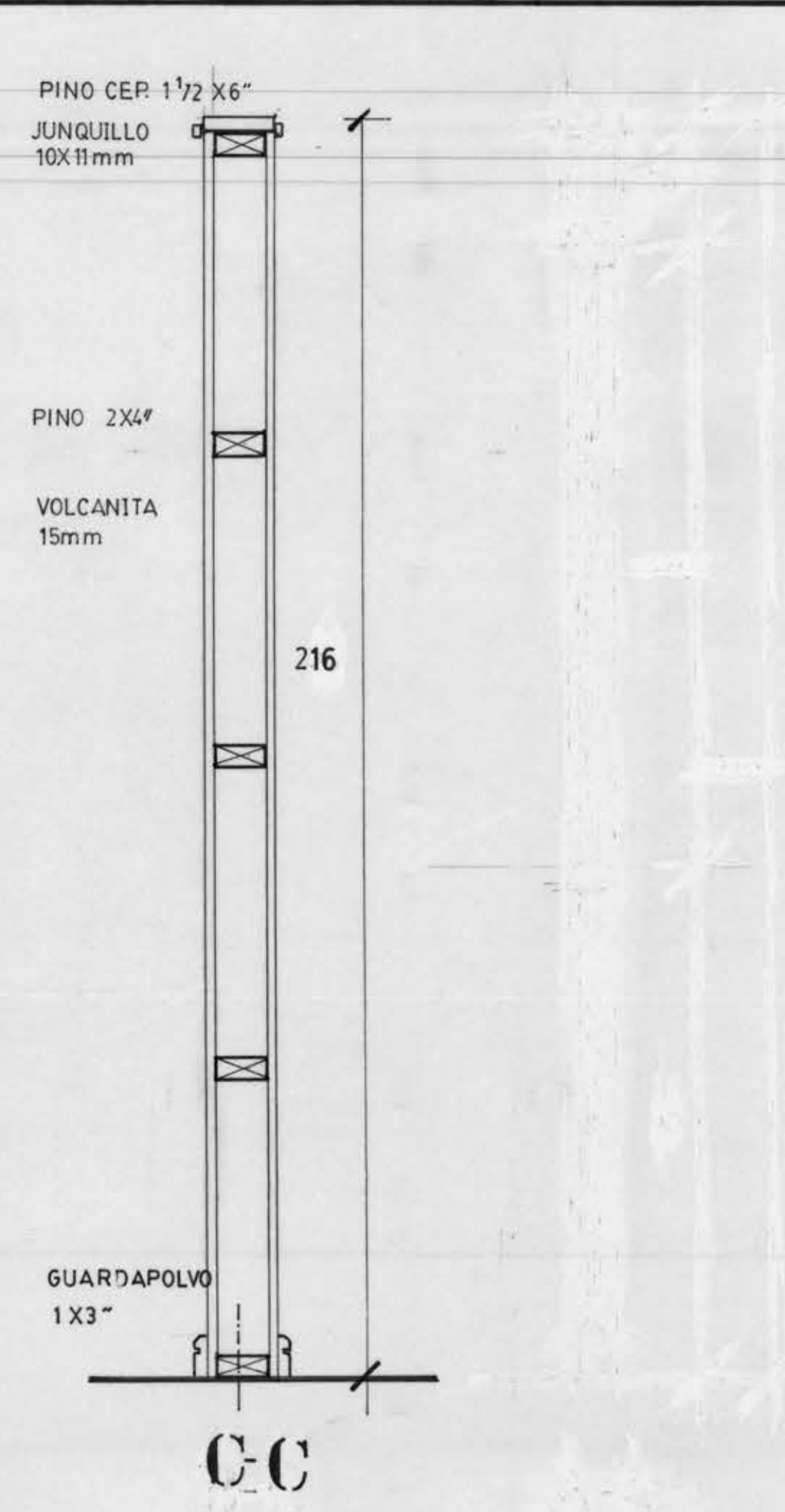
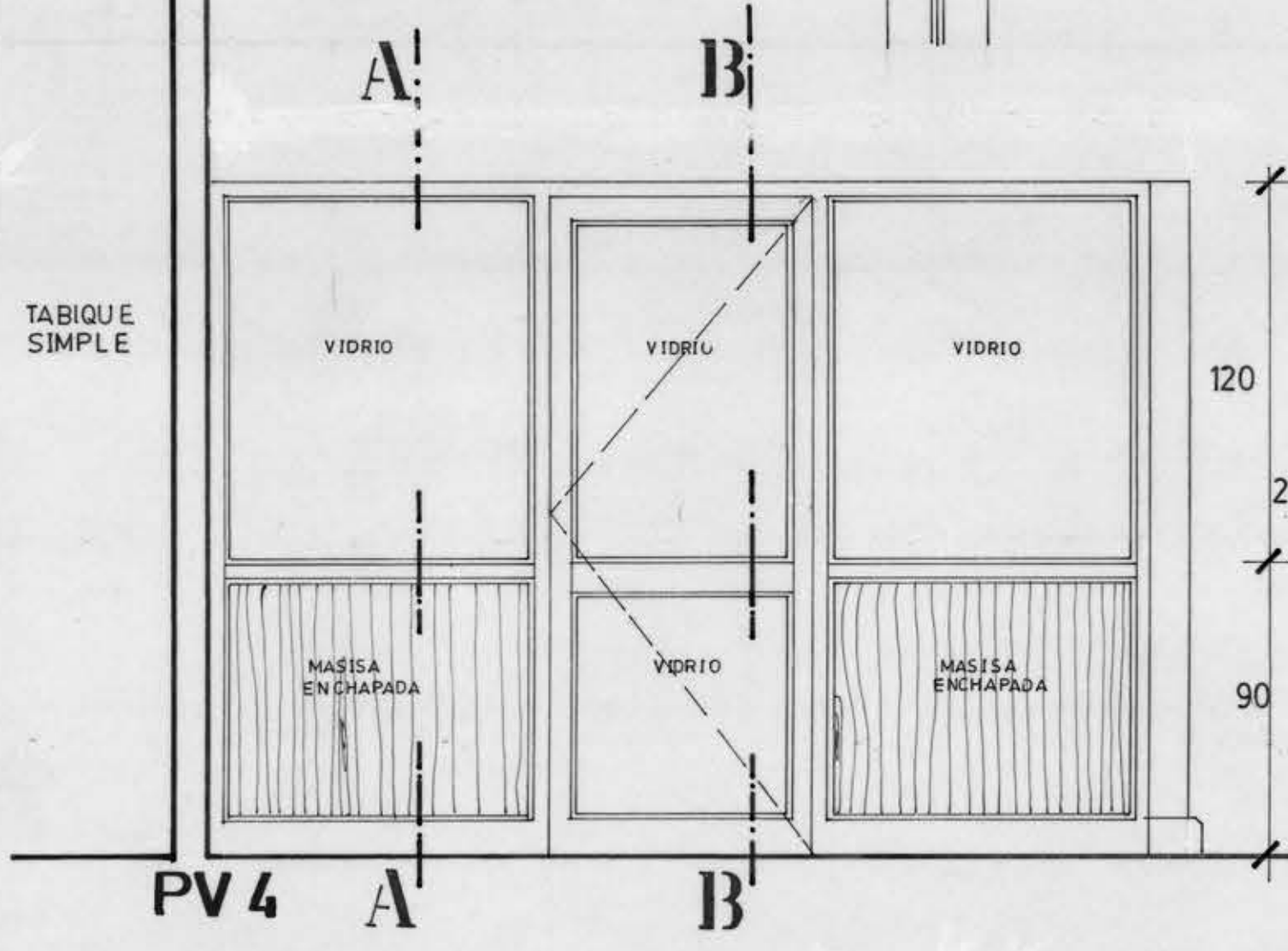


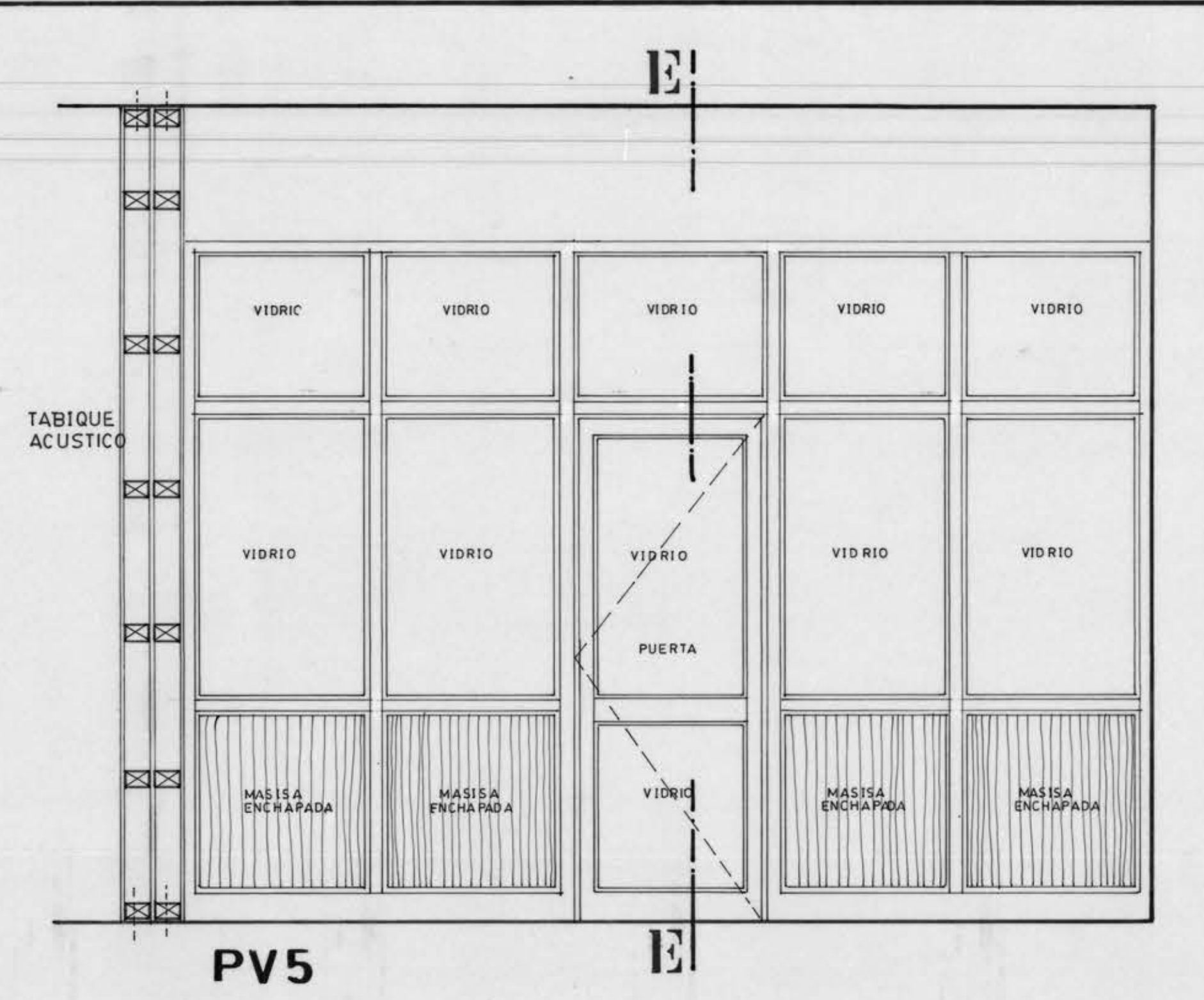
PLANTA 1 SON DOS



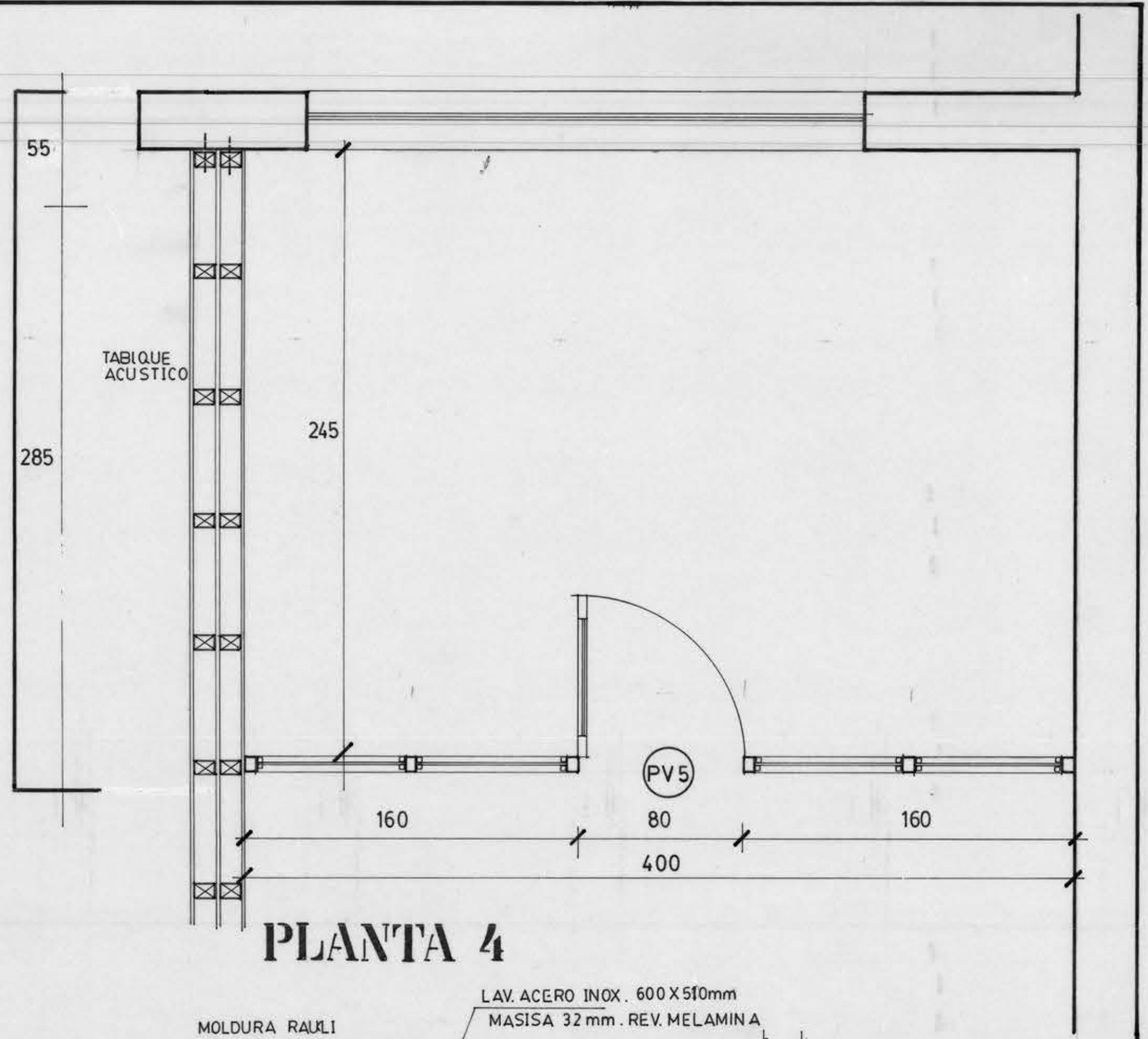
PLANTA 2



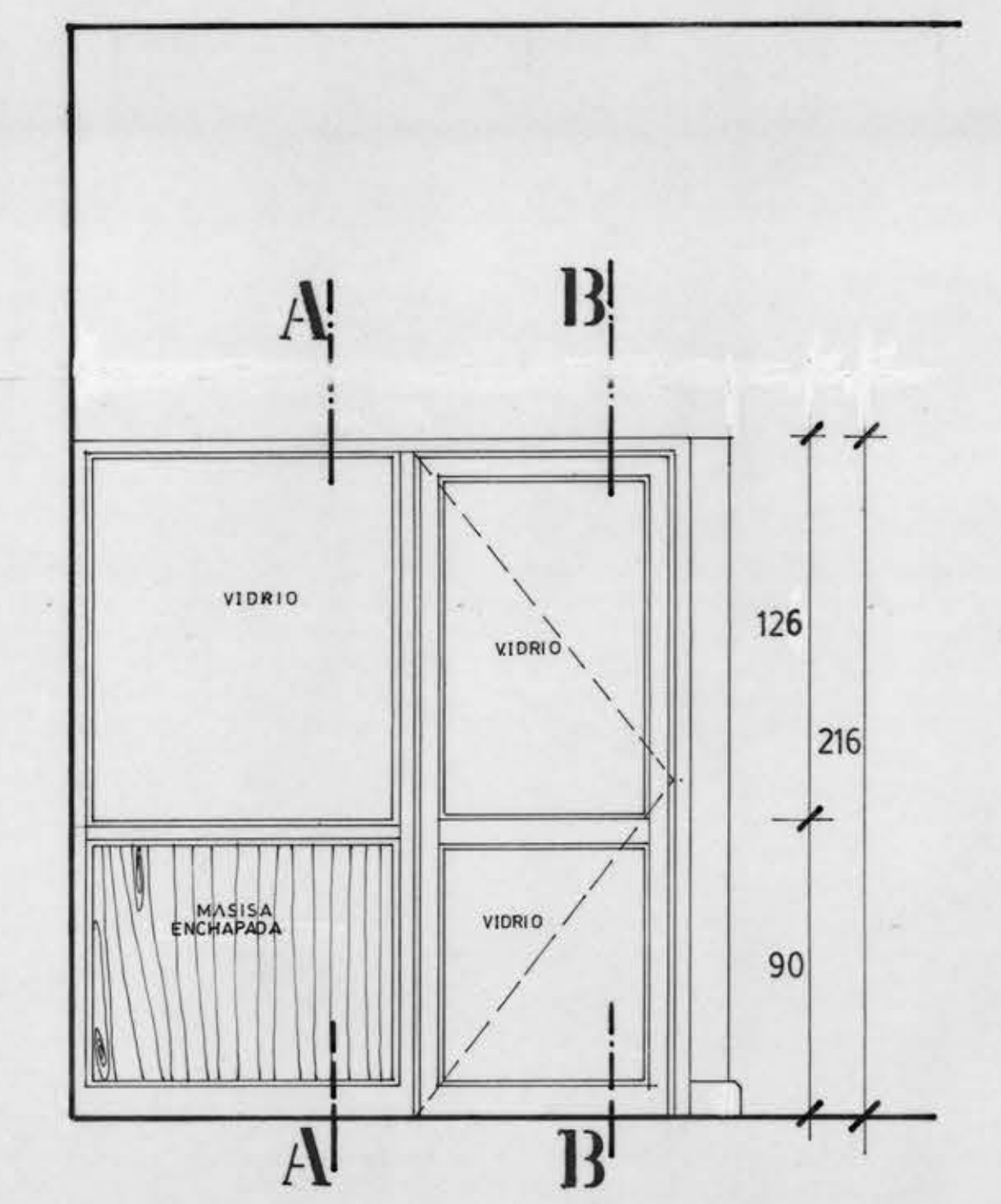
PV 4 A A B B



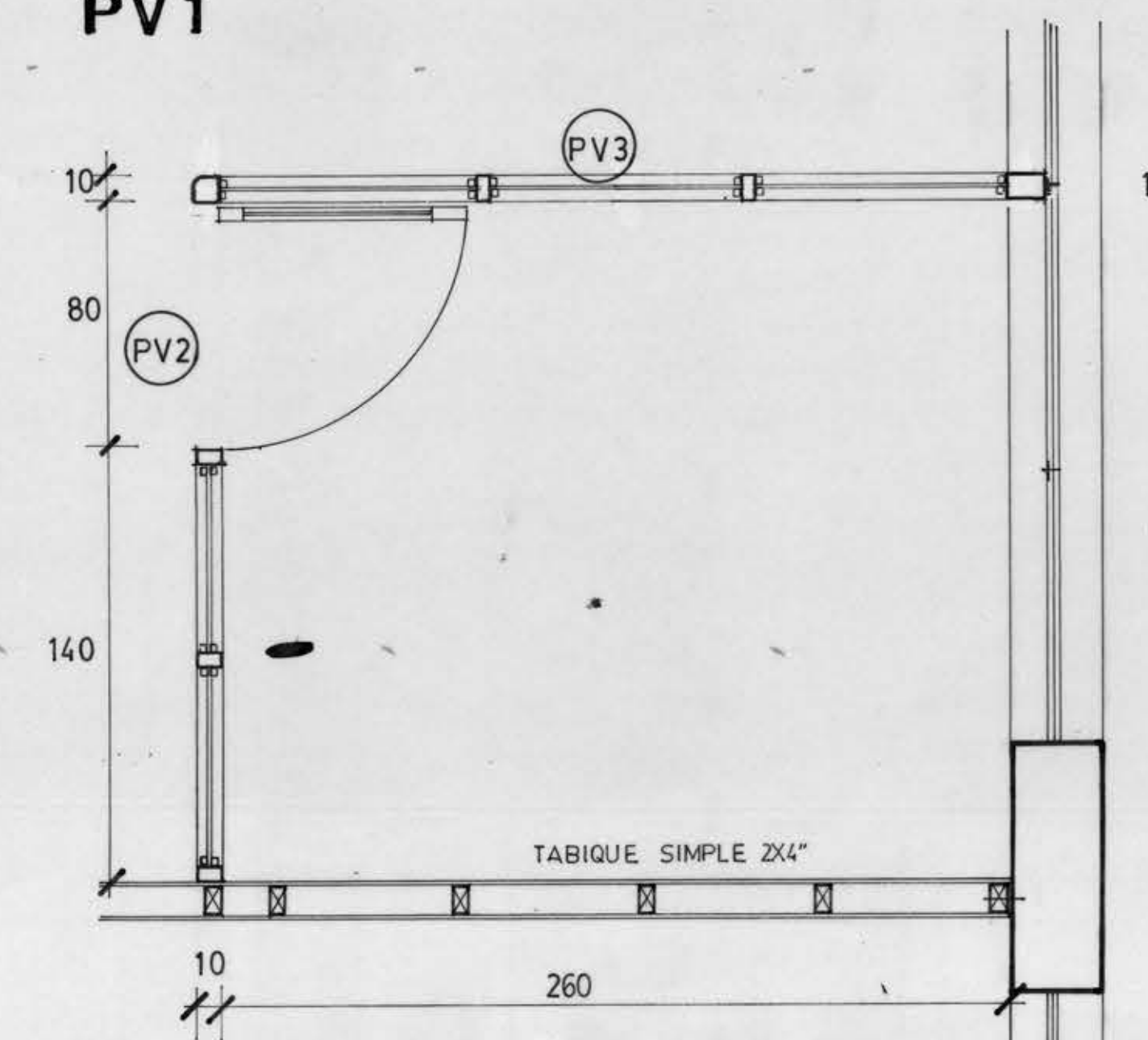
PV5



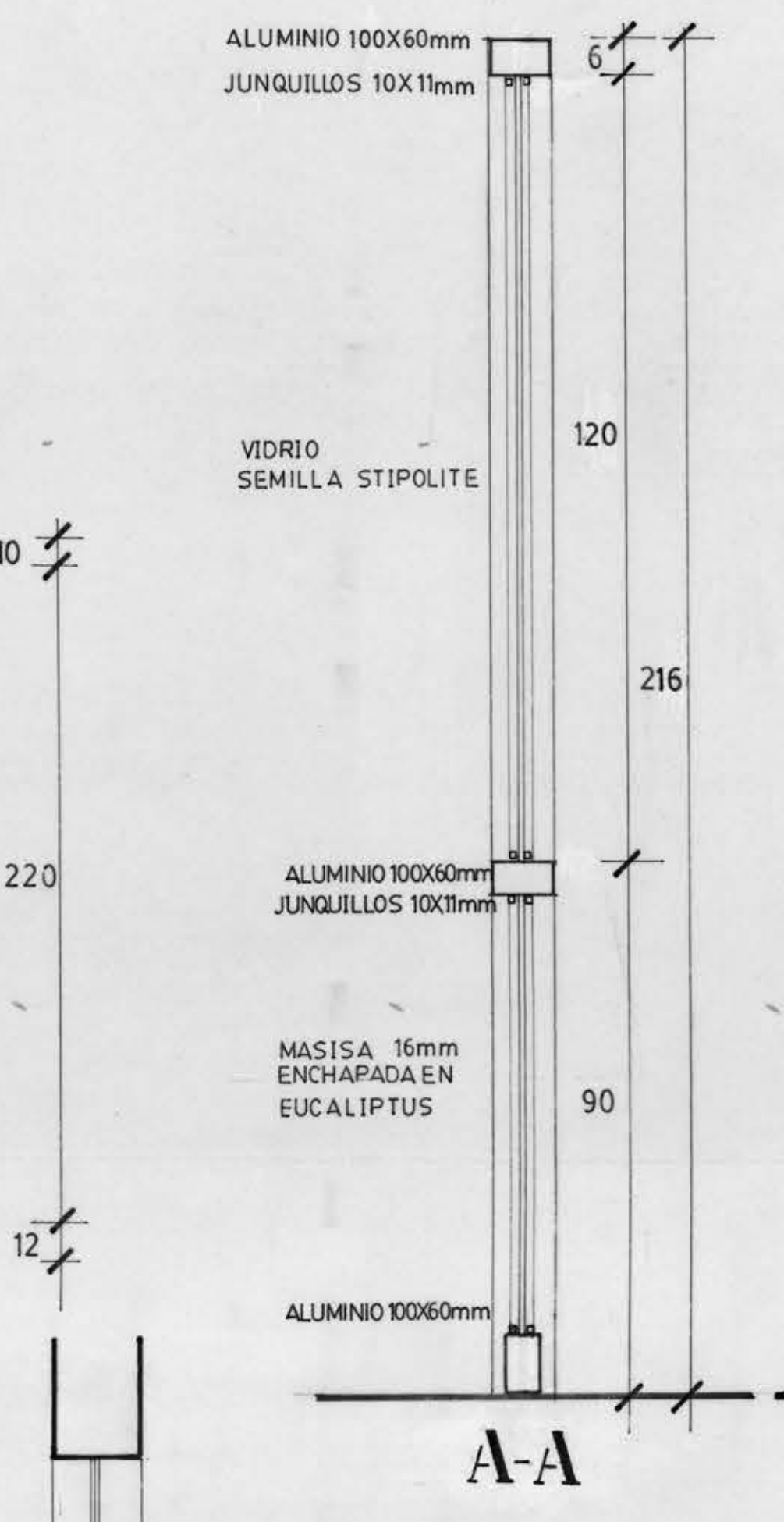
PLANTA 4



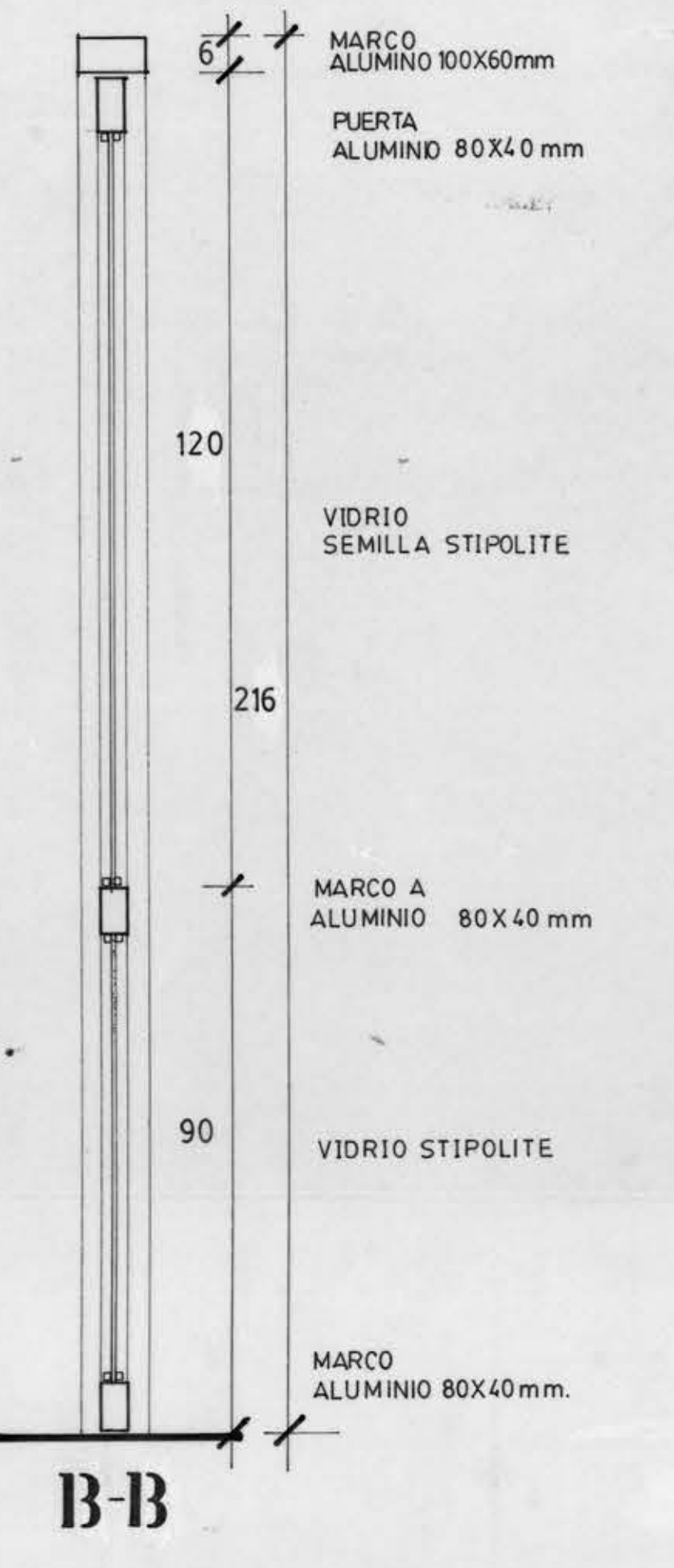
PV1



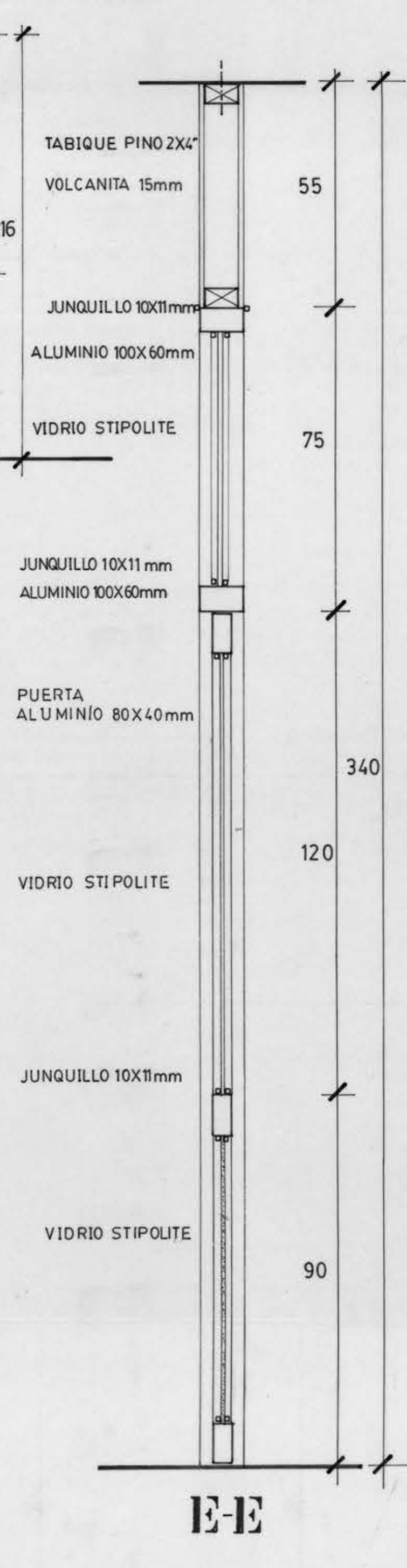
PLANTA 3



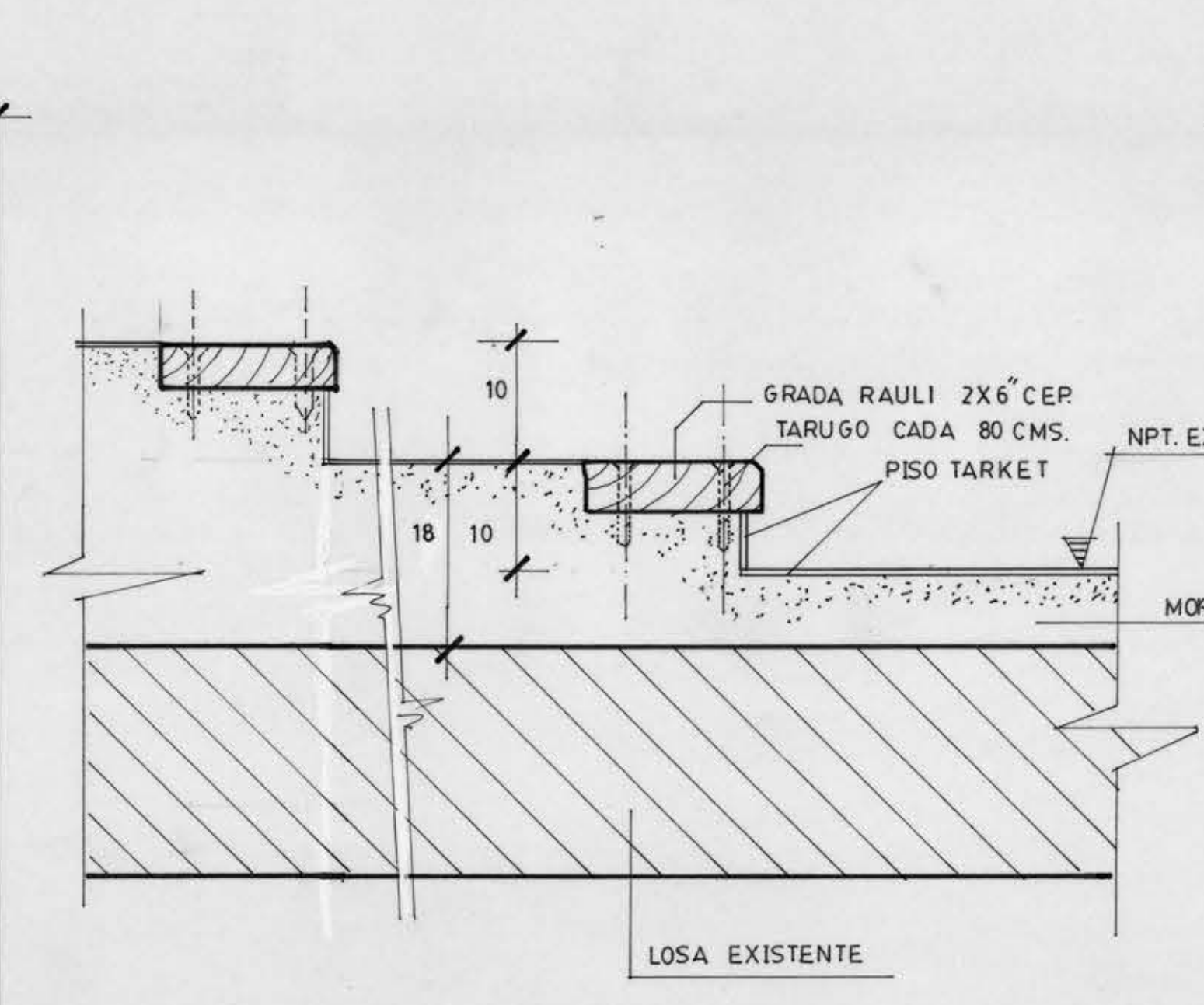
A-A



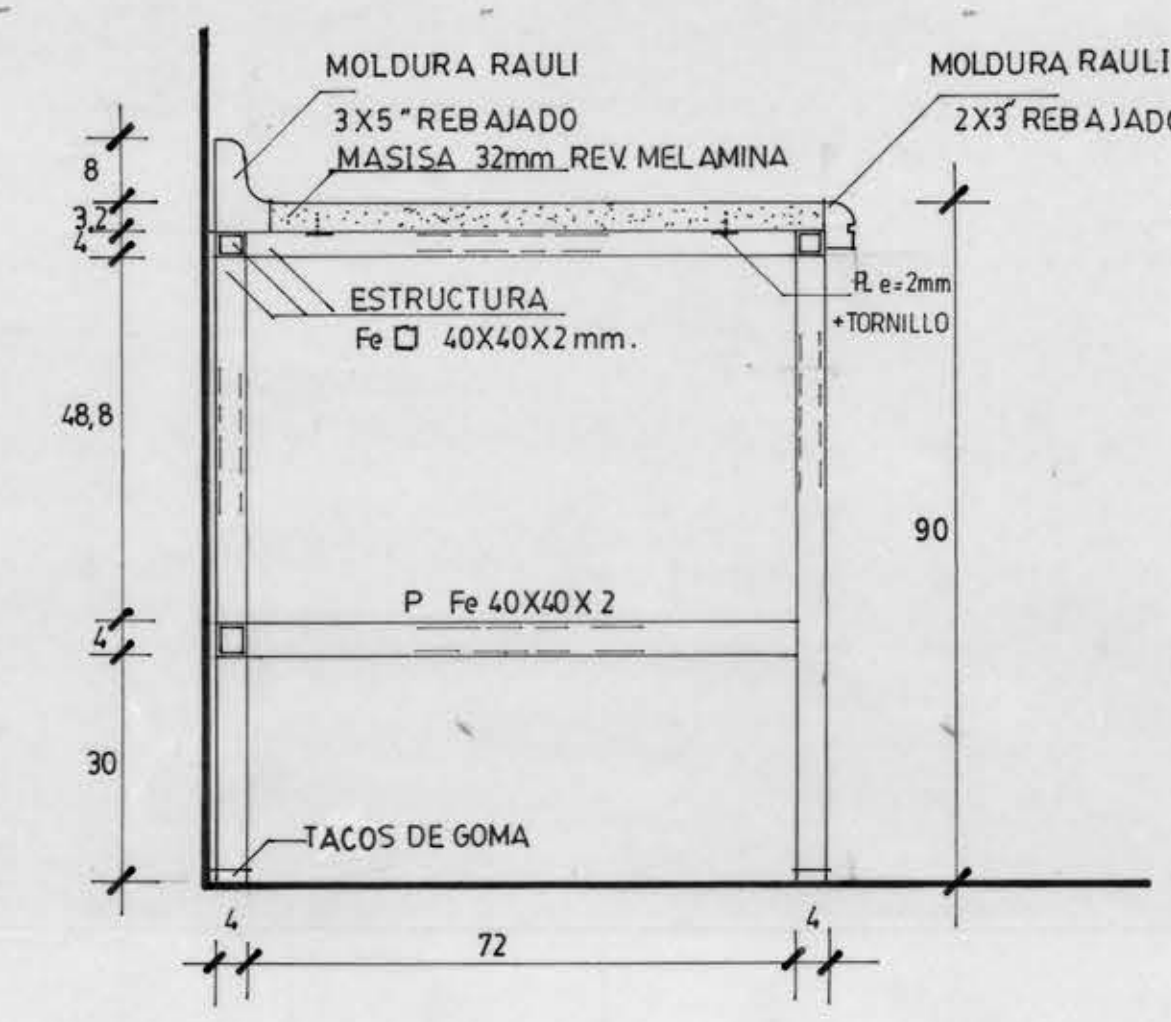
B-B



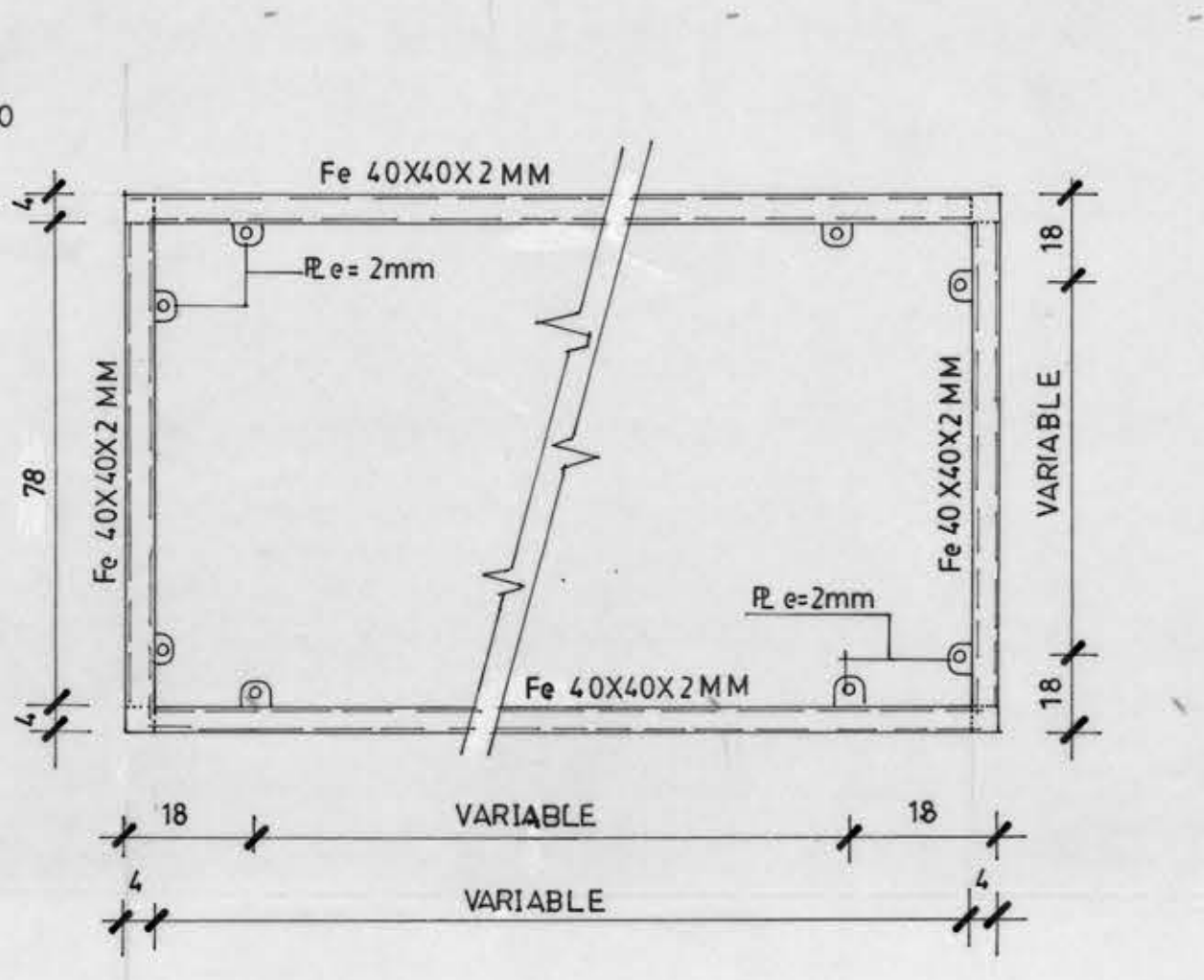
E-E



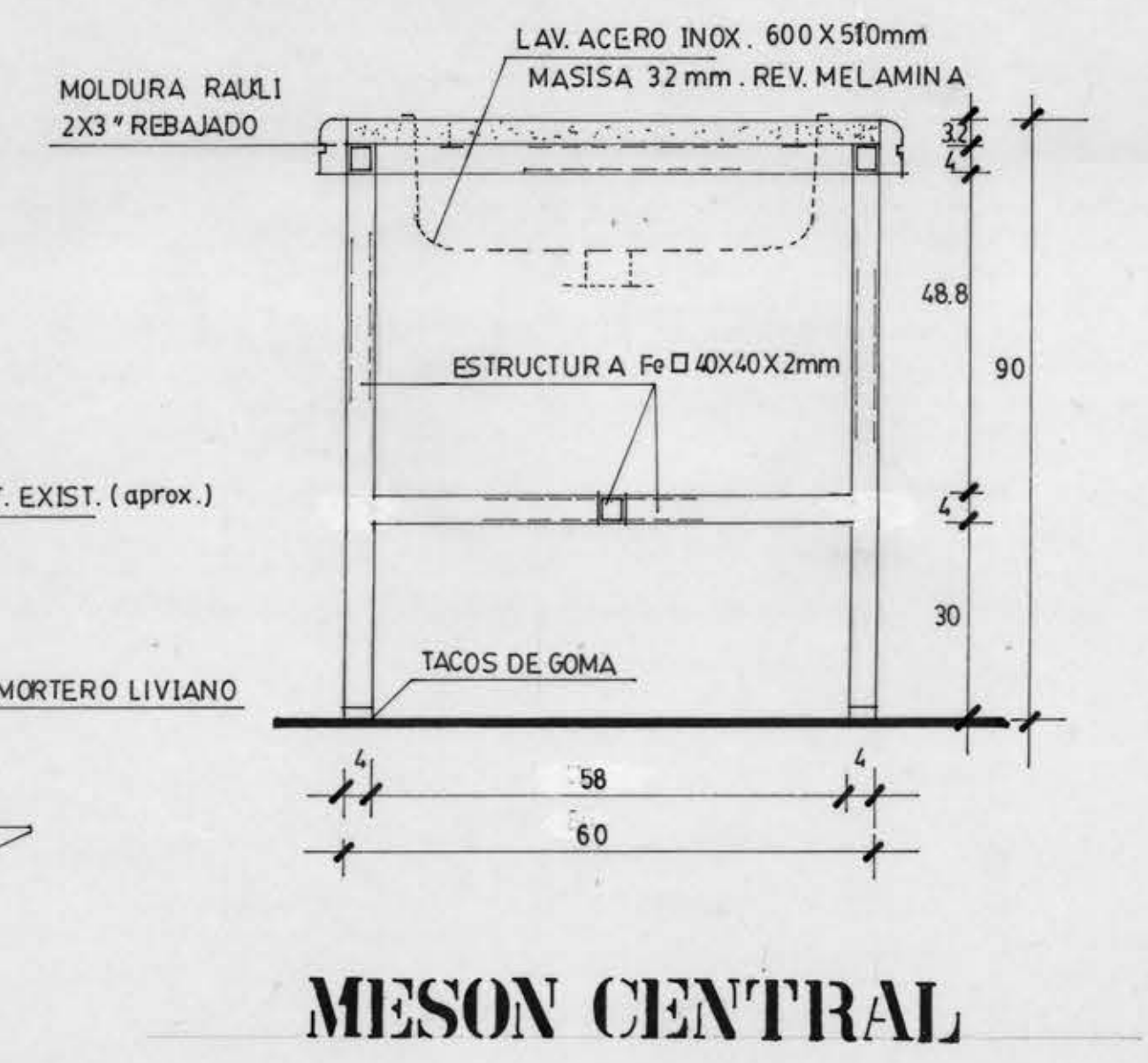
DET. GRADA SALA DE CLASES



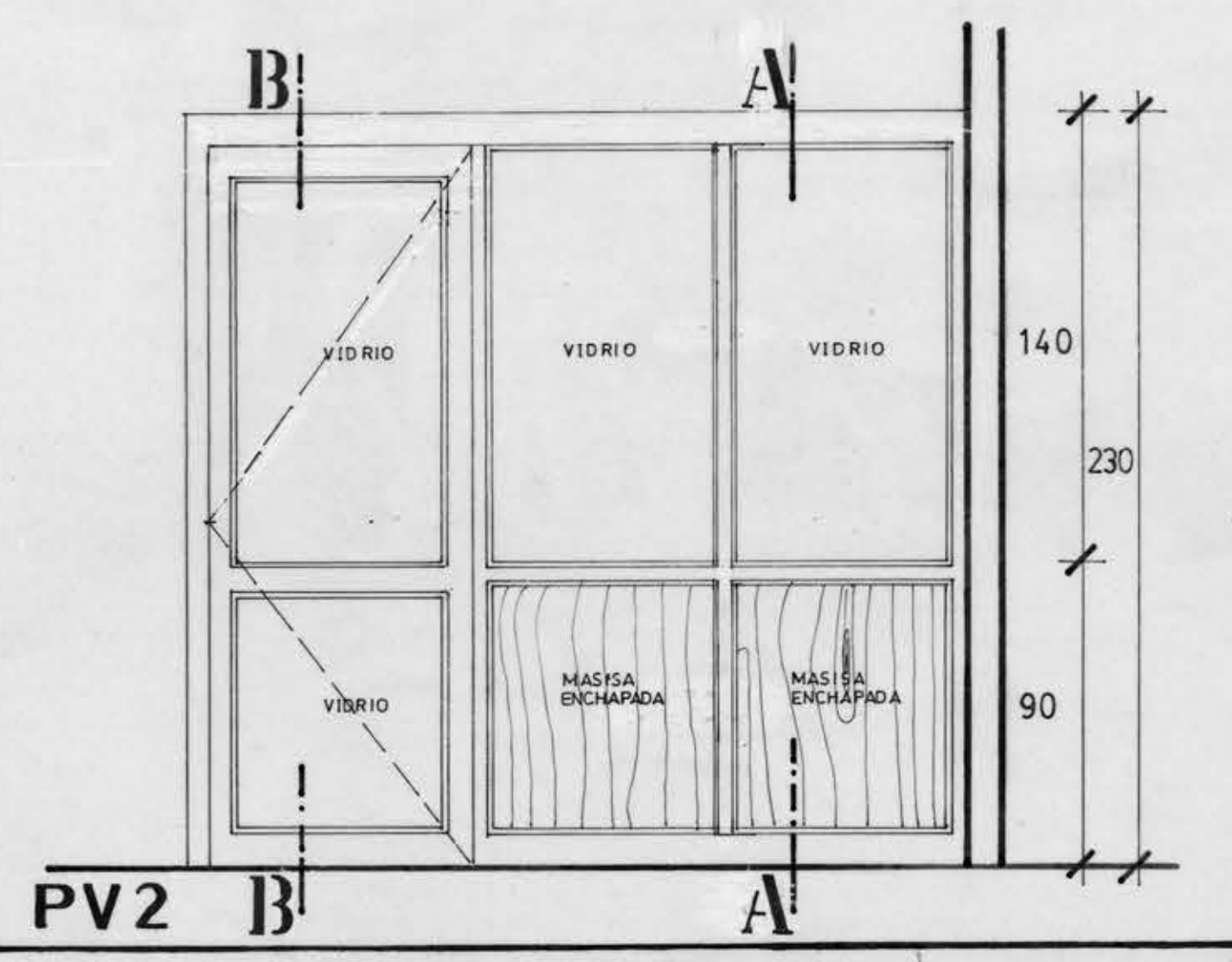
MESON PERIMETRAL



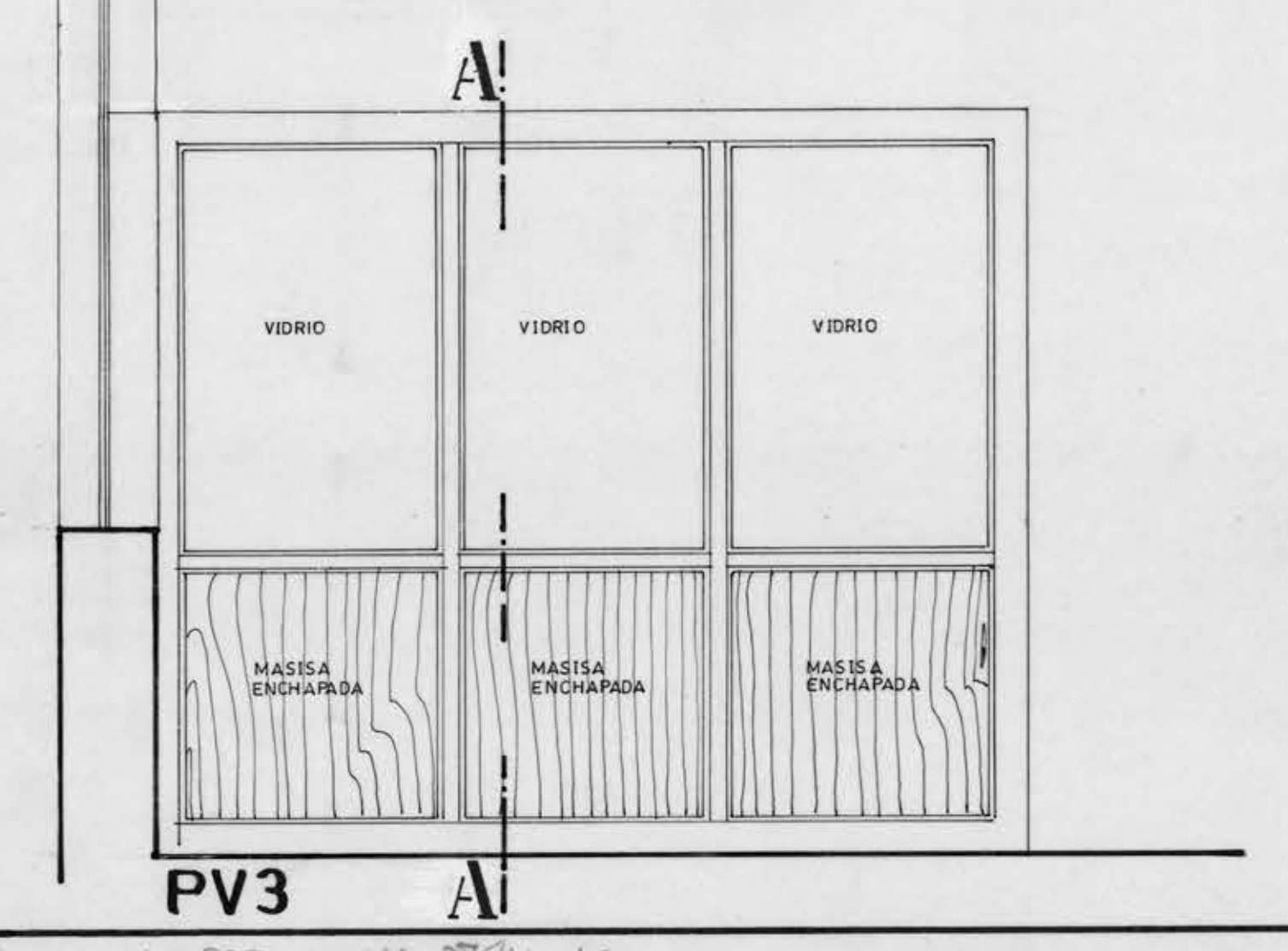
ESTRUCTURA



MESON CENTRAL



PV2



PV3

UNIVERSIDAD DE CONCEPCION DIRECCION DE SERVICIOS DIVISION OBRAS Y MANTENCIÓN		N° DE LAMINA 03	
PROYECTO : FACULTAD DE FARMACIA		ESCALA : 1:10 1:20	
MATERIA : REMODELACION NIVEL SEGUNDO PISO DET. DIVISIONES TABIQUES Y MESONES		FECHA : JULIO 12-98	
UBICACION : BARRIO UNIVERSIDAD			
REV	FECHA	DIBUJO	REVISOR
MODIFICACIONES		PROPIETARIO	CONSTRUCTOR
		GONZALO RUDOLPHY S.	REP. ALEJANDRO BRIGGEN
			MARCELINO DIAS G.

CT 0282 PISO COB - WLB-474 MEC DIRECCION DE OBRAS Y MANTENCIÓN